



Altiris® 6

Recovery Solution™

.....
 PROTECT YOUR ORGANIZATION'S COMPUTER DATA

Altiris® Recovery Solution™ protects your organization's servers and computers with scheduled backups allowing you to recover lost data or roll back to a known good state. Protection is automatic and doesn't require user intervention. Patented technology minimizes bandwidth usage making Recovery Solution an excellent choice for protecting remote and disconnected users.

BENEFITS

- > Policy-based snapshots automatically capture changes and secure data
- > Rollback for fast and reliable system fixes and file recovery
- > Back up to a local hidden partition for those environments without LAN-based connectivity
- > Web-based file recovery for anytime, anywhere user self-serve access
- > Back up and protect the operational states of your servers to ensure server consistency and increase uptime and availability
- > Quick restoration of desktops prevents time-consuming reinstalls and ensures business continuity

CAPTURING THE PERFECT SNAPSHOT

A picture says a thousand words. But a Recovery Solution snapshot says even more. By protecting your organization's computers and servers with its powerful problem resolution and disaster recovery capabilities, Recovery Solution minimizes user and server downtime and extends help desk and IT resources. With Recovery Solution you can efficiently preserve a perfect snapshot of desktops, notebooks, and servers to help protect every networked, remote, and disconnected user while consuming very little network bandwidth and storage.

PROTECTION FOR ONE AND ALL

No matter how well conceived your computer protection methods, if they don't encompass all of your organization's computers—desktops and mobile notebooks—or if you're relying on users for individual backup, you're probably not fully protected. Though many companies have automatic backup processes that rely on users to leave their computers in a specified state after work hours, if the user forgets, the computer gets skipped. If the computer is a notebook, the user is responsible for performing manual backup from home or the road. While most users try to cooperate, actual compliance is spotty.

Your servers are no less important. If a patch or software installation causes instability, do you have the ability to roll back quickly and efficiently? Recovery Solution protects the operational states of your servers using the same solution adopted for desktops and notebooks for a unified backup and recovery strategy throughout your organization allowing roll back to a known good state if problems occur.

ZERO EFFORT FOR YOUR USERS

Recovery Solution eliminates user dependencies for consistent backup while increasing peace of mind for IT personnel by protecting your organization's computers with enforceable, automatic, and transparent protection. Recovery Solution captures

complete computer snapshots according to definable schedules or policies. Because Recovery Solution takes scheduled snapshots of every desktop and server automatically, end users are free to focus on their main responsibilities. Snapshots take just a few minutes, even for notebook users connecting through a dial-up modem.

LEAVE THE WORRYING TO ALTIRIS

Recovery Solution provides total and system-wide protection for your organization's computers, including operating system, applications, network settings, drive mappings, peripheral drivers, data, and other configuration settings. The solution also captures e-mail messages, contacts, and calendar entries, even while the e-mail application is in use. And because of the unobtrusive nature of each snapshot, users continue to work completely unaware that snapshots are being taken. Remote users are prompted at log in to allow the snapshot, but once it begins, the process is transparent and users can continue with their work uninterrupted.

THREE LEVELS OF EFFICIENT COMPRESSION

Recovery Solution provides a three-level approach to minimize file transfer with each snapshot:

- > *Redundant file elimination (RFE)*. Patented technology filters out files that already exist in the Recovery Solution repository storing common files once across your entire organization.
- > *Redundant block elimination (RBE)*. Patented technology reduces data transmission by transmitting and storing only portions or blocks of each file that are different from the previous snapshot.
- > *HLZS data compression*. The industry standard for lossless data compression.

These technologies work together to make the backup process as seamless and efficient as possible, achieve compression ratios as high as 15:1, minimize network loads, and provide scalability to thousands of users per repository.

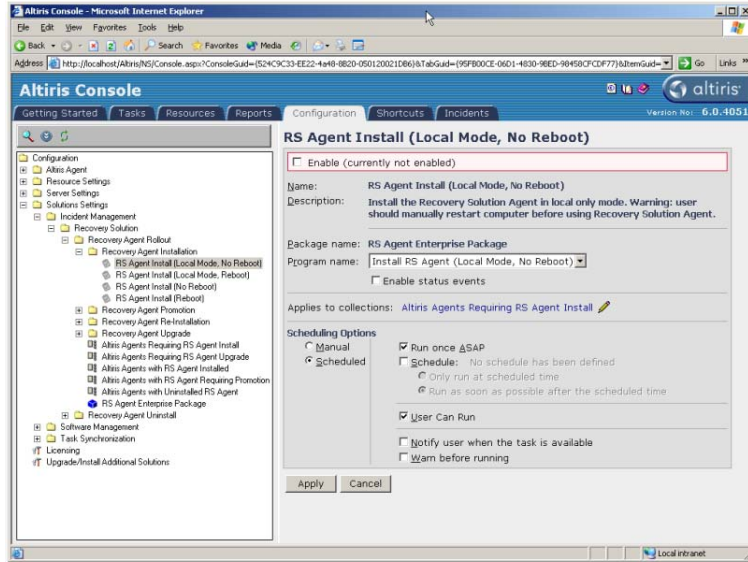


altiris®
 intuitive > manageability

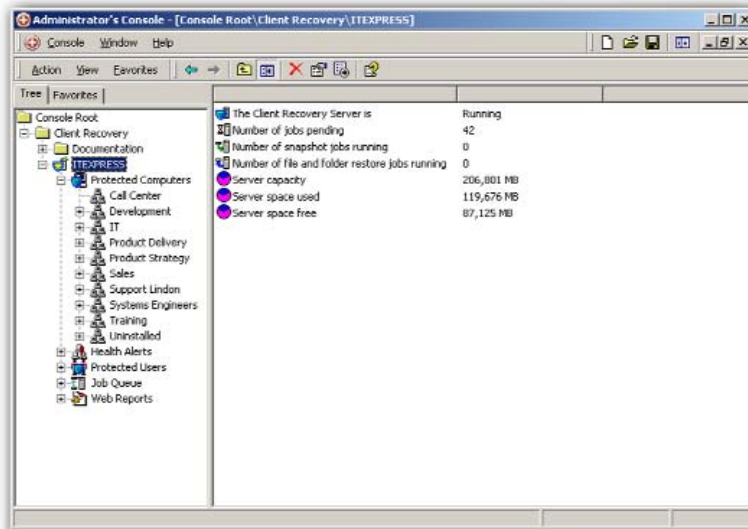
“This backup and recovery technology has helped us recover untold amounts of data and information while the redundant file and block elimination technology saves server drive space letting us backup more people at a lower cost. An employee recently dropped a cappuccino onto their laptop and the machine’s hard drive and data were lost. Fortunately, we were able to restore settings, files and other critical data within a couple of hours with the Recovery Solution technology.”

—STEVE JORDAN

Computer Technician
Morris Communications



Recovery Solution integrates seamlessly with Altiris software, including Notification Server, Client Management Suite, Server Management Suite, Patch Management Solution, Software Delivery Solution, and PC Transplant Solution. New features include the ability to leverage existing SQL installations in your environment for improved performance and scalability.



Recovery Solution’s backup and recovery tasks are easy using the Microsoft Management Console (MMC). You can view storage statistics or restore a user’s data file—all done remotely from a central console.



TRY RECOVERY SOLUTION FREE FOR 30 DAYS!

Get your 30-day, fully-functional evaluation copy of Recovery Solution at www.altiris.com/eval.

SYSTEM REQUIREMENTS

Server Minimum Requirements

- > Processor—Pentium* III 800 MHz or faster
- > Memory—1 GB RAM
- > Hard drive—20 GB
- > Operating system—Windows* Server 2003 or Windows 2000 Server
- > Database—Microsoft* SQL Server 2000 SP3
- > Browser—Microsoft Internet Explorer 6.0 or later

Client Minimum Requirements

- > Processor—Pentium 150 MHz
- > Hard disk—30 MB
- > Operating system—Windows 95

